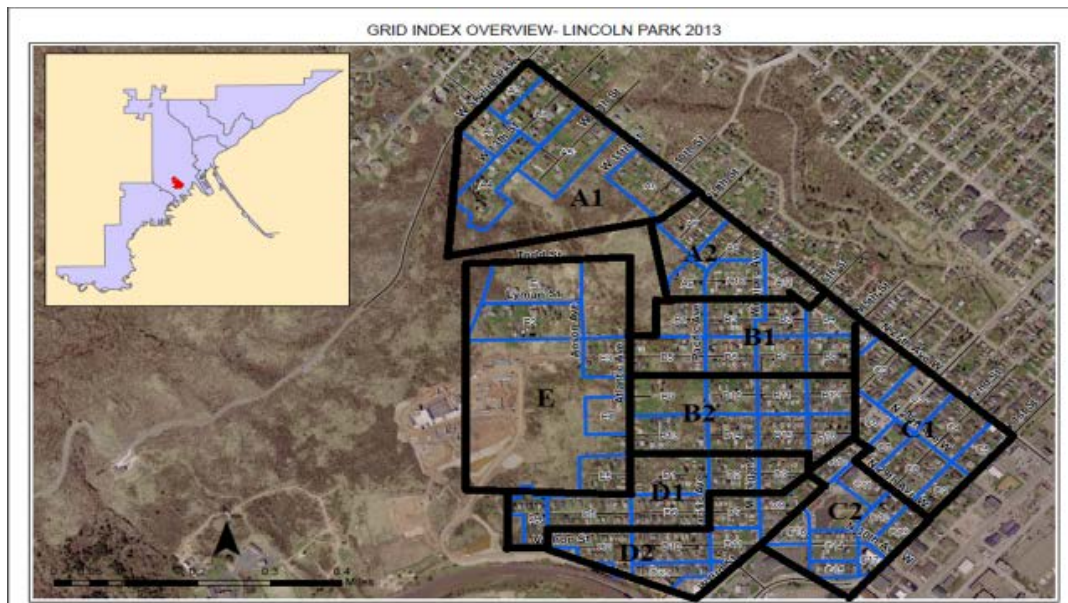


Summary of Lincoln Park Community Impact Measurement Report Prepared in 2019

Introduction

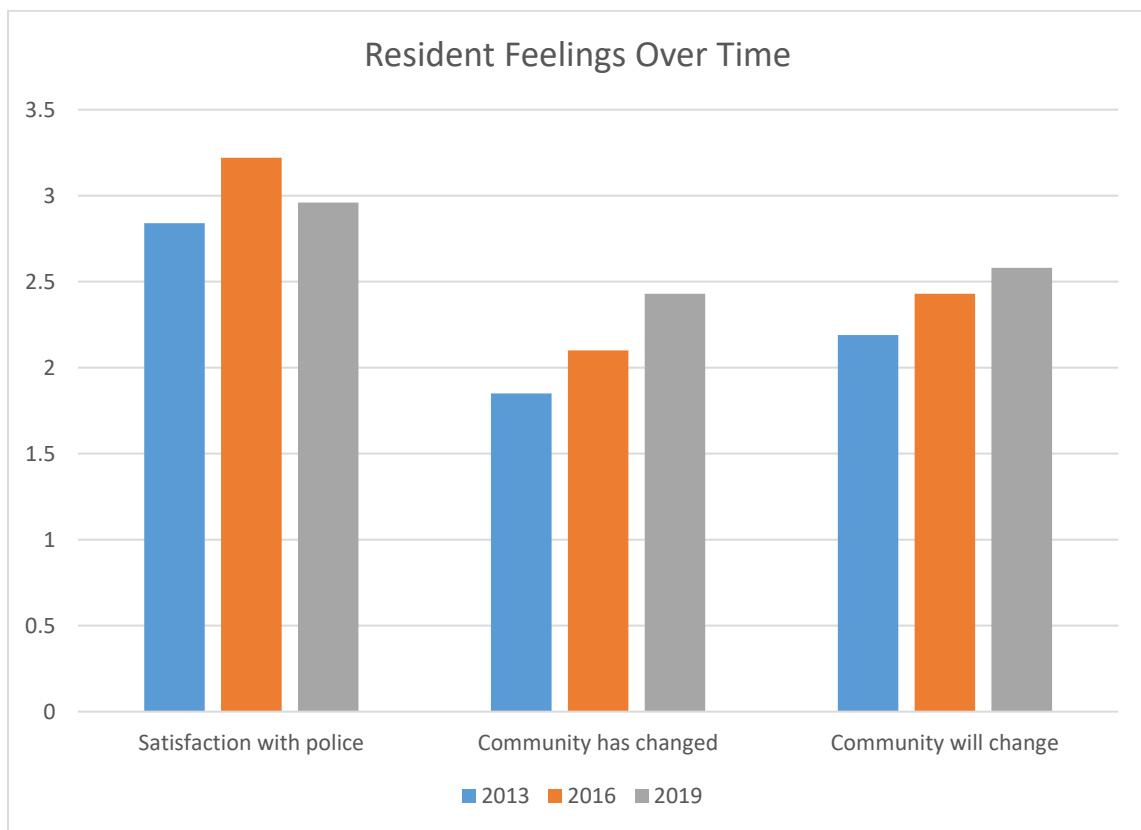
Two different information sources were examined for this report. The first source had to do with how residents felt about the community they lived in and this information was gathered by having people knock on doors in the target area (pictured below) and give people a survey that asked questions about feelings of safety and satisfaction living in their neighborhood, among other things. The second source had to do with the general observed conditions of everything from buildings to street conditions within the target area and this was gathered by having people score conditions on a standardized scale. Data was collected on both resident feelings and observed conditions in 2013, 2016 and 2019. The full report looks at the results of the 2019 project alone as well as differences across years for the 2013, 2016, and 2019 projects. This summary report will only focus on key differences that were found over time.

Note: Pages were spaced such that text would appear on same page as accompanying graph.



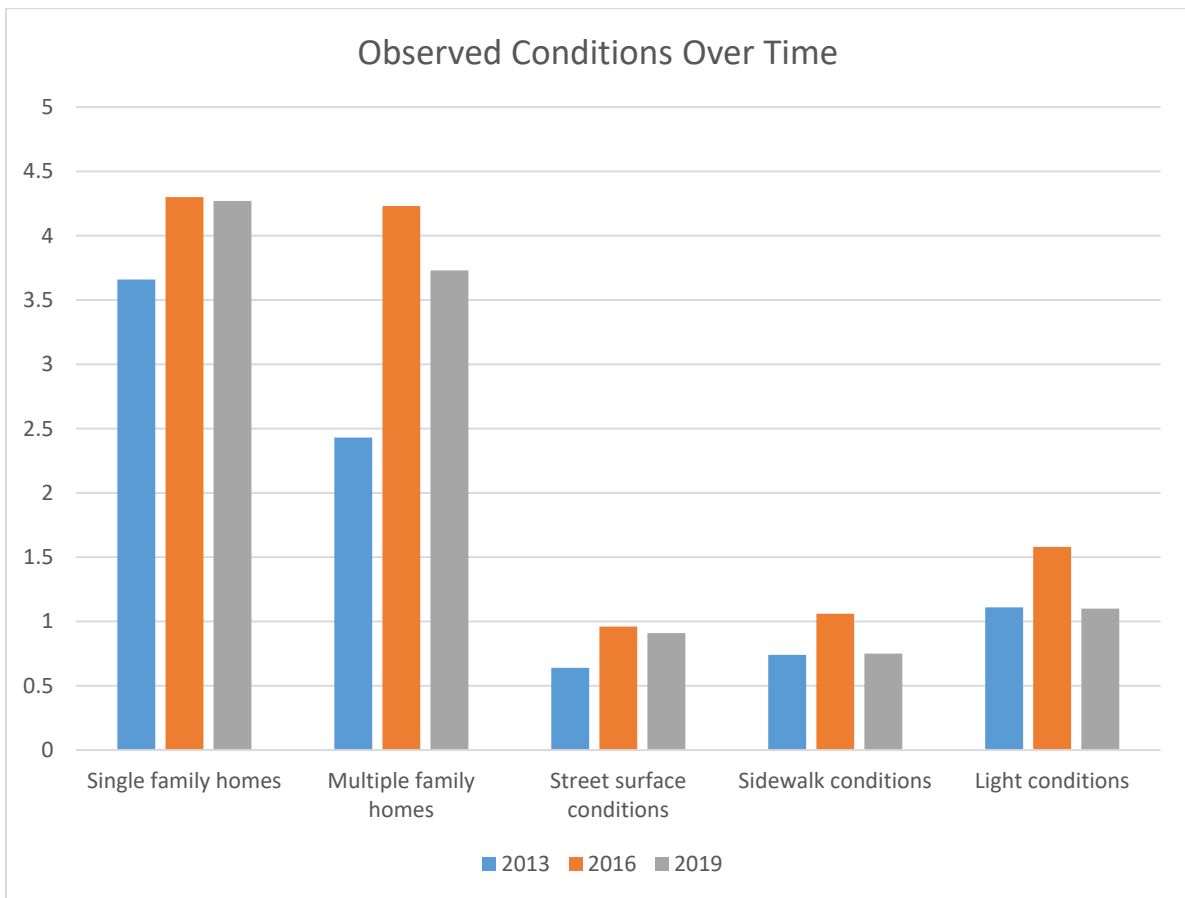
Resident feelings about their community from 2013 to 2019

In 2013, 200 responses were gathered, in 2016, 234 responses were gathered, and in 2019 219 responses were gathered to find out how people felt about the community that they lived in. The change over time is encouraging, but results are mixed with 2016 and 2019 being comparable on most questions. Notable differences are shown below. Please note for the chart that is below that higher scores are better and also that the “satisfaction with police,” “community has changed,” and the “community will change” questions could potentially have a score as high as a ‘4.’ While these changes do not appear to be large when looking at them at a glance, they are fairly significant increases when considering how many people were asked each year. For further details and context, please see the full report.



Observed conditions from 2013 to 2019

In 2013, 2016, and 2019, every single block within the target area was observed and the total number of blocks was 105. The change from 2013 to 2016 was encouraging, but 2019 mostly shows decreases back to 2013 levels. Please note for the chart that is below that while the building conditions (single and multiple) could score as high as a '5,' the infrastructure (street, sidewalk, lighting) conditions could only score as high as a '2.' Again, higher scores are better and the same context as above applies here to the observed magnitude of the change. More detail and context is available in the full report.



Conclusion

According to the available data, the Lincoln Park target area saw some improvement from 2013 to 2016 and some of these trends appear to have continued from 2016 to 2019. However, 2019 scores largely remained similar to 2016 scores in many areas and decreased from 2016 scores in other areas. Lincoln Park will continue to be an area in which One Roof Community Housing, in collaboration with other organizations, shall continue to focus special attention.

Note: Please direct any comments or questions to zwittrock@1roofhousing.org